



ZOLA
DISTRIBUTING

The Choice of Window and Film Professionals



1

2

3

4

5

6

7

Table of Contents

- 1 - Chemicals
- 2 - Cutting Tools
- 3 - Hard Card/Squeegees
- 4 - Scraper Tools
- 5 - Sprayers/Cleaning Supplies
- 6 - Installation Aids
- 7 - Meters



Shipping Information
We strive to bring you the best products at the best values. We ship exclusively with UPS to ensure that your product gets to you safely and at a reasonable cost. We charge based on the specific weight of your purchase to provide you the best value. All orders will be shipped UPS Ground service unless otherwise specified.

Return Policy

Things happen and products sometimes will need to be returned. Products purchased from Zola Distributing may be returned as long as the items are new, unused and returned within 30 days of purchase. The customer is responsible for the return shipping costs and a 15% restocking fee if the item is not defective and they simply want to return it. Zola Distributing will pay the return shipping costs if the return is the result of an error on our part or if the item(s) you received were defective or incorrect.

Please email us at returns@zoladist.com first before returning any items. We wish to expedite this process and letting us know that items are being returned will enable us to process the return quickly. Once we receive your email, we will email you the RA# and return shipping instructions.

Once the items are received into our warehouse, you should expect to receive a credit to the card the order was placed on within 30 days. This time frame includes inspection time, internal processing time and credit card processing time.

By using Zola's color codes, you can quickly find the tools you need for your specific market.

- A** Automotive Window Film
- F** Flat Glass
- W** Vehicle Wraps
- P** Paint Protection Film





A F **CH733**
32 OZ. DIRT-OFF CONCENTRATE
Great product for cleaning the glass prior to the application of film. This will not only clean the surface of the glass, but help to remove contaminants from the pores of the glass to give you a perfectly prepped surface.



A F W P **CH1036**
SIMPLE PINK ADHESIVE REMOVER
Window Film industry standard for removing adhesive left behind after a window tint removal. When you have a tough job to clean up, Simple Pink comes through every time!



A F **CH160**
19 OZ. FILM GUARD
Cleans and protects all window films once installed on glass. This product is also great for cleaning any plastic, plexi-glass or acrylic surface. Also use to refresh convertible top windows and dash gauge lenses. (Aerosol Product. No Air Freight)



A **CH1034**
32 OZ. DOT DEVIL
Dot Devil is a terrific solution to assist in getting window film to stick to the dot matrix area of automotive glass.



A F W P **CH1041**
30 OZ. RAPID TAC 2
Rapid Tac 2 is an adhesive promoter that increases the bond of the adhesive on window films and vinyl. This solution is commonly used to get window tint to adhere to the dot matrix areas of automotive glass.



A F W P **CH164**
18 OZ. SPRAYWAY ADHESIVE REMOVER
Sprayway's great, water based multi-purpose adhesive remover. Great for removing window tint adhesive. (Aerosol Product. No Air Freight)



A F **CH735**
32 OZ. FILM-ON CONCENTRATE
This is simply the best mounting solution that money can buy. Made from the surfactant (slip agent) of baby shampoo with all of the potentially damaging dyes and perfumes removed. Get all of the slip you desire with much less risk of staining curtains, interior panels, etc.



A F **CH162P**
1 GALLON PINK ADHESIVE REMOVER
Concentrated adhesive remover for those tough window tint removal and clean-up jobs.



A F **CH2013C**
4 OZ. TINT SLIME
Same description as CH2013



A F **CH2013B**
32 OZ. TINT SLIME
Same description as CH2013

A F **CH2013**
1 GALLON TINT SLIME
By this time, most of you have likely heard about TintSlime either on an industry forum at an industry trade show. TintSlime is a window film mounting solution that was specifically designed by a tinter, for tinters. This product is made in the USA. What makes TintSlime so special? TintSlime works great on all pressure sensitive adhesive window films. The gallon size TintSlime makes 128 gallons of mounting solution; that is roughly 45% more than other available mounting solutions.

- NO harsh chemicals or unnecessary ingredients
 - Works with you to provide slip when needed, but tacks on demand
 - Great apple scent
 - Safe on interiors and biodegradable
- Directions: Add one oz. of TintSlime per gallon of water. Shake well. For best results, use filtered water.



A F **CH715**
19 OZ. SPRAYWAY GLASS CLEANER
Sprayway is the standard in ammonia free, window tint safe glass cleaners. This gives a final, streak-free finish without harming the window film. (Aerosol Product. No Air Freight)



A F W P **CHTO**
Tint-Off 1 qt. bottles
Specially formulated for the window film industry, TINT-OFF lets you remove window film without the hassles of regular window film removers. No messy dyes to stain interiors. No toxic ammonia to burn your eyes. It's so safe you can use it inside the vehicle for quick and easy turn-around times. Worried about damaging rear window defrosters? TINT-OFF is so gentle it removes the film without scraping, minimizing risk to delicate defrosters.



A F **CH716**
13 OZ. PLEXUS POLISH
Great product to bring the new finish back to any plastic surface including window films. This product also is ideal for a final wipe down of window tint after the installation is complete. The polish helps cover micro-scratching and leaves a protective, anti-static coating on the treated surface. (Aerosol Product. No Air Freight)



A F W P **CH1039**
32 OZ. RAPID REMOVER
This rapid window tint adhesive removal solution begins working to soften the adhesive in 60 seconds to ensure very little scraping.



CUTTING TOOLS



A F W P KB026
**NT 5-BLADE PLASTIC
CARTRIDGE KNIFE**

NT offers this inexpensive 5-blade cartridge knife with ergonomic handle for those on a tight budget. (Please note that this knife comes with non-stainless blades that can scratch glass. Please discard and insert a stainless blade before using this knife on glass.)



A F W P KB1004
**OLFA BLADE SNAP OFF
DISPOSAL CASE**

Do not let your discarded blades become a danger to you or others. Snap them off in this convenient Olfa blade disposal case. This case can be used for both 8 & 13 point blades.



W P KB1051
OLFA SAC-1 GRAPHICS KNIFE

This Olfa precision edge knife comes with the 30 Degree blade making it great for paint protection and vinyl graphics installations.



A F W P KB1021
**NT HEAVY DUTY 8 POINT BLADES
(50 Pack)**

Heavy duty 8 point blades for jobs that require a stronger edge. (Not for use on glass)



A F W P KB027
NT PRO A-1 "THE RED DOT"

This is the window tint industry standard in 13 point knives. The NT "Red Dot" features an auto locking slide and is great for both left and right handed use. (Please note that this knife comes with non-stainless blades that can scratch glass. Please discard and insert a stainless blade before using this knife on glass.)



A F W P KB1052
**OLFA CARBON 30 DEGREE BLADES
7 POINT (10 PACK)**

This carbon 7 point blade is designed for use with the Olfa SAC-1 knife. (Not for use on glass)



A F W P KB1020
**NT STAINLESS STEEL BLADES
13 POINT (50 PACK)**

These NT stainless blades might be the sharpest 13 point stainless steel blades available. These blades are a great choice for anyone that values an extremely sharp initial cutting edge.



A F W P KB127
OLFA "A" KNIFE

This Olfa "A" knife features a full stainless channel wrapped in an great ergonomic handle.



A F W P KB1054
NT A-300GR ALLOY KNIFE

This terrific, value priced knife from NT offers the great locking slide found on the more expensive NT models with a nice ergonomic handle. Don't be fooled by the price on this knife. It is a quality cutter that is sure to please. (Please note that this knife comes with non-stainless blades that can scratch glass. Please discard and insert a stainless blade before using this knife on glass.)



CUTTING TOOLS



A F P KB114
OLFA PRO-LOAD 5-BLADE CARTRIDGE KNIFE

Too busy to change blades? Olfa has you covered with the Pro Load 5-Blade Cartridge Knife. This knife conveniently holds 5 blades that allow you to keep working instead of changing blades. Comes with a sleek handle that houses the extra blades and still allows precision feel. (Please note that this knife comes with non-stainless blades that can scratch glass. Please discard and insert a stainless blade before using this knife on glass.)



A F W P KB116
OLFA STAINLESS STEEL BLADES 13 POINT (50 PACK)

New package, same great blades. The Olfa stainless steel 13pt blades are the standard by which all other blades are judged. They combine awesome sharpness and very durable edge retention in one blade. That is the reason they have been a favorite in the window tinting community for many years.



A F KB115
OLFA STAINLESS STEEL BLADES 13 POINT (10 PACK)

New package, same great blades. The Olfa stainless steel 13pt blades are the standard by which all other blades are judged. They combine awesome sharpness and very durable edge retention in one blade. That is the reason they have been a favorite in the window tinting community for many years.

Note: All knives come with carbon blades. These are not stainless steel and can scratch glass. Please discard and insert a stainless blade before using this knife on glass.



W P KB1031
OLFA ULTRAMAX CARBON STEEL 13 POINT BLADES (50 Pack)

These blades are double honed to give you maximum cutting performance. When only the sharpest will do, reach for these blades. (Not for use on glass)



A F W P KB1018
NT A250RP ERGONOMIC KNIFE

Same great auto locking slide feature as the NT "Red Dot" with a more ergonomic handle. The NT A250RP is also great for both left and right handed use. (Please note that this knife comes with non-stainless blades that can scratch glass. Please discard and insert a stainless blade before using this knife on glass.)



A KB944
MICRO-EDGE TRIM TOOL FOR AUTOMOTIVE ROLL DOWN WINDOWS

Convenient window edge trimming tool that allows you to cut a precise 1/8" micro-edge on automotive roll-down windows.



F KB128
CERAMIC SAFETY FILM CUTTER

Designed to deliver rapid, precise cuts for thick gauge safety window films. It is intended for precision pre-cutting on flat, square-edged tables. This tool is a must for safety window films that are 8 mil and thicker.

CUTTING TOOLS



A F KB126
OLFA SVR-1 SILVER KNIFE

Known as the "Olfa Silver" The Olfa SVR-1 has been a window tinting favorite for many years. This knife is an all stainless steel model with an integrated blade snapper. This product is guaranteed forever!



A F W P KB124
PLASTIC 13 POINT UTILITY KNIFE

This knife gives you a 13 point blade knife option at a very attractive price. If you tend to lose your knives regularly, this might be a great option for you. (Please note that this knife comes with non-stainless blades that can scratch glass. Please discard and insert a stainless blade before using this knife on glass.)



W P KB227
OLFA XA-1 X-DESIGN ERGONOMIC KNIFE

This knife comes with Olfa's new X-Design ergonomic handle. Great for those that like a slightly more substantial handle while maintaining precise cutting feel. (Please note that this knife comes with non-stainless blades that can scratch glass. Please discard and insert a stainless blade before using this knife on glass.)



A F P KB226
OLFA SVR-2 KNIFE WITH AUTO LOCKING FEATURE

An upgrade from the Olfa "Silver", the Olfa SVR-2 knife features an auto-locking blade and a tip designed for a lefty or righty. This product is guaranteed forever!



A F W P KB111
HEAVY DUTY AUTO-LOCK KNIFE WITH BLADE STORAGE

Heavy duty 8 point knife with blade storage in the handle. (Please note that this knife comes with non-stainless blades that can scratch glass. Please discard and insert a stainless blade before using this knife on glass.)



P KB123
OLFA CARBON STEEL BLADES 13 POINT (50 PACK)

Standard carbon snap-off blades. Great for general purpose cutting. (Not for use on glass)



A F W P KB262
KDS STAINLESS STEEL 13 POINT BLADES WITH FINE HONE (50 PACK)

This knife gives you a 13 point blade knife option at a very attractive price. If you tend to lose your knives regularly, this might be a great option for you. (Please note that this knife comes with non-stainless blades that can scratch glass. Please discard and insert a stainless blade before using this knife on glass.)



A F W P KB266
KDS STAINLESS STEEL 13 POINT BLADES WITH STANDARD HONE (10 PACK)

A F W P KB265
KDS STAINLESS STEEL 13 POINT BLADES WITH STANDARD HONE (50 PACK)

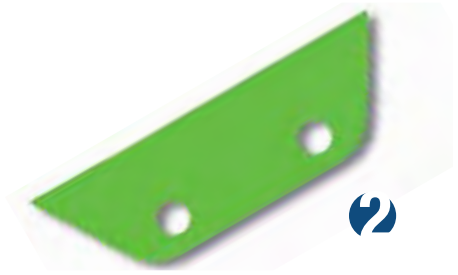
These KDS 13-point stainless steel blades might just be the best bang for your buck on the market today. This blade was designed specifically for the window tint industry. This is a great blade with a standard hone for good initial sharpness coupled with solid edge durability. If you have never tried this KDS alternative, you owe it to yourself to find out for yourself why window tint shops all over the world are making the switch.



HARD CARD/SQUEEGEES



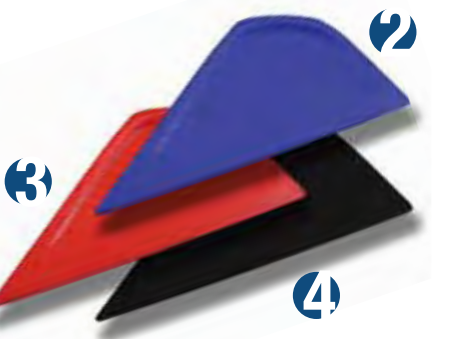
A **HC032Y**
TAIL FIN SQUEEGEE - YELLOW



A **HC032G**
TAIL FIN SQUEEGEE - GREEN
The Tail Fin is designed with a negative curve to enable consistent blade pressure on the window film in tight areas where you may not be able to angle the blade properly. Measuring nearly 12" at the blade, the Tail Fin has become an auto tinter's favorite tool for getting behind 3rd brake lights. The Tail Fin comes in two hardness levels to suit installer preferences.
HC032Y Yellow (medium)
HC032G Green (soft)

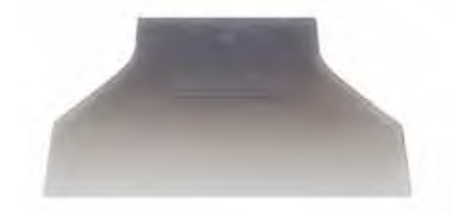


A **F** **HC033**
RED DEVIL TRIM & CORNER TOOL
Like many installation tools in the window tinting industry, the Red Devil corner tool was not originally designed for window tint installation. However, many resourceful installers determined that this tool could be used to access very tight areas to lay down film. Also, many flat glass installers found that it makes a great trim guide tool as well. The Red Devil comes with an 8" long body and pointed tip design.



A **HC044**
LITTLE FOOT SQUEEGEE - RED
A **HC044BLK**
LITTLE FOOT SQUEEGEE - BLACK
A **HC044BLU**
LITTLE FOOT SQUEEGEE - BLUE
The Little Foot squeegee is the younger sibling of long time window tinting favorite the Big Foot. The Little Foot is a great tool for getting into tight, hard to reach corners. The Little Foot window tinting squeegee comes in 3 hardness ratings to suit most installer's tastes.
HC044BLK Black (hard)
HC044 Red (medium)
HC044BLU Blue (soft)

DUROMETER LEGEND:
1 2 3 4 5
SOFT —————> HARD



A **HC066**
SPEHAR CLEAR SUPER SQUEEGEE - MED (6")
These flexible polyurethane window film installation tools offer the unique ability for the installer to customize the shape of the tool. When held in the desired position and heated with a heat gun, these tools will retain the desired shape when cooled down.



A **HC038**
SPEHAR CLEAR SUPER SQUEEGEE - LARGE (12")
These flexible polyurethane window film installation tools offer the unique ability for the installer to customize the shape of the tool. When held in the desired position and heated with a heat gun, these tools will retain the desired shape when cooled down.



A **HC995**
SPEHAR WHITE KNIGHT HARD CARD
This hard card is one of the stiffest available. With a unique design to fit into tight spaces for laying down film or chizling, this window tinting tool deserves a spot in your arsenal.



HARD CARD/SQUEEGEES

HARD CARD/SQUEEGEES



A F **HC079**
4" 3M GOLD BONDO CARD

The 3M Gold Bondo is a stand-out installation tool for the window film and vinyl graphics industries. This tool is formulated out of a special resin that enables it to be durable and glide easily across the material being installed. Give the 3M Gold Bondo a try and learn why many view this as a must have installation tool.



A W **HC087GRAY**
4" LIDCO GRAY BONDO CARD

A W **HC087-6GRAY**
6" LIDCO GRAY BONDO CARD

The Lidco Gray Bondo cards are similar in construction to the 3M Gold Bondo card. Their unique base resin allows these cards to glide across window film and vinyl graphic material easily.



A F W **HC099**
4" UNIVERSAL BONDO CARD

This economical bondo card can be used for the installation of many types of materials including window tint, vinyl graphics and vehicle wraps.



A W **HC087**
4" LIDCO YELLOW BONDO CARD

This bondo card from Lidco is very similar to the 3M Blue Bondo card. It is economically priced and works well with a variety of materials. This bondo card will not be quite as durable or glide as easily across the material being installed as with the 3M Gold Bondo card or the Lidco Gray Bondo card, but it is still a favorite among many window tint and vinyl graphics installers.



A W P **HC080**
4" 3M BLUE BONDO CARD

Similar to popular 3M Gold Bondo, this 3M Blue Bondo card is made from less expensive base materials to offer an economic alternative. The differences between 3M Gold Bondo and this 3M Blue Bondo card come down to durability and the ease in which the card glides across the material. While 3M Gold Bondo is preferred among many window tinters, this card is still a favorite among many window film installers.



W P **HC2002**
4" BLACK MAGNETIC BONDO CARD

Wow!! What a simple, but innovative tool that any installer would want at their disposal. This bondo card can be used to smooth out vinyl graphics and wraps like any standard card that you are already using. The difference with this card is the magnets that are molded inside of the tool. These magnets allow you to stick the tool onto the surface of the car for positioning of material as well as just keeping the tool close at hand while working the vinyl. Give this great tool a try and you will be wondering why someone did not think of this idea a long time ago.



A W **HC068**
TEFLON & BONDO HARD CARD SHARPENER

Extend the life of all the Teflon and Bondo cards that you own. This clever tool takes a very thin slice off the edge of your rough or nicked cards restoring a clean factory edge. The sharpener uses standard 13pt blade segments making blade changes convenient and inexpensive.



A F P **HC083**
THE ORIGINAL LIL' CHIZLER

What needs to be said about this tool? The Lil' Chizler has been helping window film installers get to hard to reach areas for over 10 years. This is a must have in any window tinter's tool pouch.



A F P **HC083W**
THE WHITE CHIZLER

The White Chizler is slightly larger than the Original Lil' Chizler. It also is harder and has thicker edges than the original. This tool is ideal for "chizling" out tiny creases in the film. It can also be used for film, decal and adhesive removal.



A W P **HC1050**
BUCKEYE BLADE 2

This ultra cool tool can be used for be used for laying down touch spots as well as lifting gaskets to tuck the film on roll downs. This new tool is certain to become an installer favorite and become a permanent part of your tool pouch.



A P **HC201G**
CONTOUR SQUEEGEE - GREEN

A W **HC201Y**
CONTOUR SQUEEGEE - YELLOW

A P **HC201PLT**
CONTOUR SQUEEGEE - PLATINUM

The Contour has quickly become an automotive window tinting favorite. This tool's unique design enables it to naturally disperse the window film finger tension to enable fingers to be smoothed out in tough areas. The Contour tool comes in three hardness levels to satisfy any window tinter's tastes.

Platinum (hard)
Yellow (medium)
Green (soft)



A **HC1049**
BUCKEYE BLADE 1

The new Buckeye Blade 1 is a revolutionary improvement from the Lil' Chizler. This unique tool allows the user to apply pressure to a concentrated area for everything from laying down a stubborn little finger to removing adhesive around delicate defroster lines. Plus, the contoured design makes working on curved surfaces a snap.



A F **HC092**
THE SHUTTLE CORNER TOOL

The Shuttle has been in the window tint industry for a long time because it works. The Shuttle comes with a 10" body and a variety of different angles to get into nearly any corner or tight spot in an automobile. Try one today and find out what many window tinters have known for years.



A W P **HC1025PLT**
REBEL HARD CARD - PLATINUM

A W P **HC1025W**
REBEL HARD CARD - WHITE

A W P **HC1025Y**
REBEL HARD CARD - YELLOW

A W P **HC1025Y**
REBEL HARD CARD - YELLOW

The Rebel Hard Card is an angled "bondo" style card that works great for getting into tight areas, behind gaskets or rubber seals. Window Tinters have been trimming bondo and teflon hard cards for many years in an attempt to get them into these areas. Now you can buy a tool that comes pre-cut with the angles you need. The Rebel comes in three levels of stiffness: Yellow (soft), White (medium) and Platinum (hard). This item is for quantity of one Rebel Hard Card

DUROMETER LEGEND:



HARD CARD/SQUEEGEES

HARD CARD/SQUEEGEES



4

A F **HC086**
4" WHITE TEFLON HARD CARD SQUEEGEE

The standard 4" version of the window film industry standard in teflon cards. This versatile hard card can be used for heat shrinking, bumping edges and chiseling. Many tinters cut these cards into various shapes to even make them more useful. This is one tool that qualifies as a window tinting "must have".



5

A F **HC086PLAT**
4" PLATINUM TEFLON HARD CARD SQUEEGEE

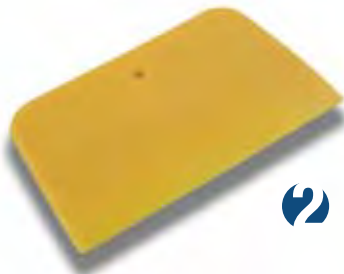
The Platinum Teflon was created when some tinters were asking for something harder than the White Teflon card. This is the hardest teflon card available. It is ideal for heat shrinking and bumping the edges.



3

A **HC086BLK**
4" BLACK TEFLON HARD CARD SQUEEGEE

The Black Teflon hard card is more flexible than the White Teflon card. The softer material makes it ideal for use on all types of window tint installation. This card would be too soft for use heat shrinking window film.



2

A **HC088**
YELLOW BONDO SPREADER SQUEEGEE

This flexible bondo spreader style card can be used in hard to reach areas and for getting behind tight 3rd brake lihts.



4

A F **HC086GLD**
4" GOLD TEFLON HARD CARD SQUEEGEE

The Gold Teflon card is harder than the Black Teflon, but slightly softer than the White Teflon card. This particular window tinting tool is a great choice for heat shrinking and final edge bumping for water extraction.



4

A F P **HC086PURPLE**
4" PURPLE TEFLON HARD CARD SQUEEGEE

The Purple Teflon is created with a new blend designed to give you the ideal fusion of stiffness and flexibility. The card seems to be stiff in all the areas that you want it to be and still retain flexibility when that is required. This is a must try card for any window tinter!



2

A W P **HC086BLU**
4" BLUE TEFLON HARD CARD SQUEEGEE

The Blue Teflon is much softer than the other teflon hard cards. This tool is used primarily for paint protection film and vinyl graphic installations or when tinting areas of extremely curved glass.



3

A F **HC086PINK**
4" PINK TEFLON HARD CARD SQUEEGEE

The Pink Teflon hard card is softer than the White Teflon making it an ideal choice for use on metallic and ceramic window films.



3



4

A F **HC086-6Y**
6" YELLOW TEFLON HARD CARD SQUEEGEE

This is a very versatile Teflon card in a larger size. The Yellow Teflon's larger size enables it to contour to surfaces easily. This card can also be used effectively as a trim guide for flat glass window film installations.

A F **HC086-6B**
6" BLACK TEFLON HARD CARD SQUEEGEE

The Black Teflon hard card is more flexible than the White Teflon card. The softer material makes it ideal for use on all types of window tint installation. This card would be too soft for use heat shrinking window film.

A F **HC086-6W**
6" WHITE TEFLON HARD CARD SQUEEGEE

The larger 6" version of the window film industry standard in Teflon cards. This versatile hard card can be used for heat shrinking, bumping edges and chizling. Many tinters cut these cards into various shapes to even make them more useful. This is one tool that qualifies as a window tinting "must have".



A W P **HC1064**
4" LIDCO BONDO CARD WITH FELT EDGE

This tool combines the popular Lidco 4" bondo card and a felt edge installed on one side to give you a great paint protection film and vinyl graphic tool.



A F W P **HC1065**
4" FELT SLEEVE FOR BONDO CARDS

This convenient felt sleeve can make nearly any 4" bondo card more user friendly when it comes to installations on paint protection films and vinyl graphic vehicle wraps.



A W P **HC1010**
3M WET & DRY RUBBER SQUEEGEE

This 3M Wet & Dry rubber squeegee is terrific for making initial smoothing passes on window film, laying down paint protection films and squeegeeing out vinyl and texture graphic films.

DUROMETER LEGEND:
1 2 3 4 5
SOFT → HARD



HARD CARD/SQUEEGEES



A **HC1068B**
GO DOCTOR HANDLED
INSTALLATION SQUEEGEE - BLUE

A F W P **HC1068Y**
GO DOCTOR HANDLED
INSTALLATION SQUEEGEE - YELLOW

A F W P **HC1068R**
GO DOCTOR HANDLED
INSTALLATION SQUEEGEE - RED

Welcome to the future of window tint handled installation squeegees. This 8" long and 5" wide tool is the perfect size for most applications. The Go Doctor's signature I-beam handle fits comfortably in your hand and the unique frame construction was specifically designed to transfer more of your energy to the blade's point-of-contact. The result is greater squeegee efficiency and reduced installer fatigue. In addition, the I-beam handle is wrapped with a comfortable, non-slip material that provides secure grip in all conditions. Finally, the Go Doctor incorporates a quick-change blade system allowing the installer to quickly change damaged blades or switch to a different squeegee firmness on demand. All three Go Doctor blades will fit in this handle to make this one of the most versatile tools available.
HC1068B blue (hard)
HC1068Y yellow (medium)
HC1068R red (soft)



A F **HC1069B**
GO DOCTOR HANDLED
INSTALLATION SQUEEGEE
REPLACEMENT BLADE - BLUE

A F **HC1069Y**
GO DOCTOR HANDLED
INSTALLATION SQUEEGEE
REPLACEMENT BLADE - YELLOW

A F **HC1069R**
GO DOCTOR HANDLED
INSTALLATION SQUEEGEE
REPLACEMENT BLADE - RED
This replacement blade for the popular Go Doctor. With their universal design, this blade can be used in any of the Go Doctor handles.



A **HC149**
12" WHITE SQUEEGEE WITH BLACK
RUBBER EDGE

This window film tool is an installer favorite. The tool has a medium flex, thin resin body combined with a soft rubber squeegee edge. The thin body helps you reach into tight spaces for either a final squeegee swipe or to lay down film. This tool comes in a 6" and 12" size to suit installer's tastes.



A **HC101**
TRI-EDGE HARD CARD - BLUE

A **HC102**
TRI-EDGE HARD CARD - YELLOW

A **HC103**
TRI-EDGE HARD CARD - ORANGE

This is a new tool in the industry with the latest technology that helps apply window film with ease. Its patented design high-quality materials make this tool one of a kind. Its precision angles and comfort grip will allow the user to reach those challenging areas to achieve perfection. This tool has been analyzed and closely inspected to ensure that the finish is smooth; no more rough edges. This technology is estimated to greatly reduce the risk of potential scratches when applying the film.

HC101 blue (soft)
HC102 yellow (medium)
HC103 orange (hard)



A **HC148**
6" WHITE SQUEEGEE WITH BLACK
RUBBER EDGE

This window film tool is an installer favorite. The tool has a medium flex, thin resin body combined with a soft rubber squeegee edge. The thin body helps you reach into tight spaces for either a final squeegee swipe or to lay down film. This tool comes in a 6" and 12" size to suit installer's tastes.

HARD CARD/SQUEEGEES



A F W **HC1070**
SMART CARD PLATINUM

Welcome to the future! This Smart Card is the next generation of the hard card. This tool is 25% larger than your typical hard card. It features an ergonomic design, just the right amount of flex and a tapered tip. Use this tool for installation, getting behind gaskets and seals, bumping edges, etc. This just might be the smartest card in your apron!



A F **HC1070F**
SMART CARD PLATINUM
WITH FELT EDGE

Great new Smart Card ergonomic shape with an integrated felt edge for easy gliding on vinyl graphics and paint protection films.



A **HS034**
WHALE TAIL SQUEEGEE COMPLETE

This large (nearly 12" wide) squeegee blade with handle allows for an easy reach into the back deck area of most cars and the thin blade design allows it to slide easily behind 3rd brake lights for easier window film installations.



A F W P **HC1077**
FELT EDGE HARD CARD PRO-PACK

This four-pack of popular hard cards comes equipped with a soft felt edge making them perfect for paint protection film and vinyl graphic applications. Many people are also beginning to use felt edge hard cards for heat shrinking high performance ceramic and multi-layer window films. The felt edge allows for accurate heat shrinking while maintaining a soft edge to help prevent adhesive smear.



A W P **HC1000**
MACTAC FELT SQUEEGEE

This Mactac felt squeegee is fast becoming a favorite of installers of paint protection films, vinyl graphic wraps and high end window films. This squeegee will glide across the material without creating an undesired amount of surface friction which can smear the adhesive layer causing distortion. If you are installing paint protection films, vinyl wraps or high end window films, you owe it to yourself to give this tool a try.



A **HS040**
SLIM FOOT SQUEEGEE

The Slim Foot was modeled after the Big Foot Squeegee, but with a more slender design to reach into tighter areas of the rear deck. This no rib on the installation end of the squeegee which allows access behind 3rd brake lights. The Slim Foot also features a vinyl grip for secure handling.



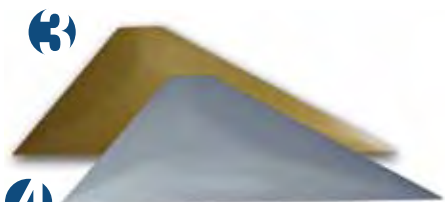
A **HS091**
SLAMMER

This window tinting standby is used for everything from cleaning out corners and along gaskets to laying down film in hard to reach areas. It can also be used to wick water out along window borders. The sharp angle allows access to many tight spots unreachable by other tools.



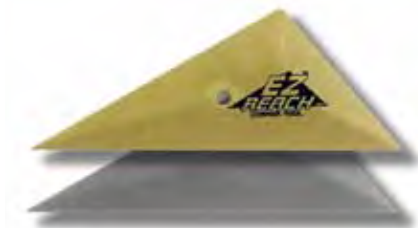
HARD CARD/SQUEEGEES

HARD CARD/SQUEEGEES



HC200
EZ REACH HARD CARD - GOLD
HC200PLT
EZ REACH HARD CARD - PLATINUM

This is the newly updated design on what has become a window tint industry favorite. The new design features a flat portion on the top to make the tool more ergonomic in your hand. Also, the elimination of the center hole makes the tool more rigid across the nose. The EZ Reach hard card comes in two hardness levels. Platinum(hard) and Gold(medium)



HC2003
THE ORIGINAL GOLD EZ REACH

HC2003PLT
THE ORIGINAL PLATINUM EZ REACH

The Original Platinum EZ Reach Corner Tool. This tool has been a window tint industry favorite for many years and allows the installer to get to those hard to reach corners. Recently, the mold was revised and many people were clamoring for the old design. As a result, we are bringing back the original design in both the Gold and the Platinum versions.



HC113GRN
DIAMOND TIP HARD CARD - GREEN
HC113RED
DIAMOND TIP HARD CARD - RED
HC113WHT
DIAMOND TIP HARD CARD - WHITE

HC113YLW
DIAMOND TIP HARD CARD - YELLOW
The Diamond Tip window tinting tool comes with corners cut at a 20 degree angle to assist the installer with tight corner windows. The Diamond tip comes in 4 hardness ratings to suite any window tinter. White(hard), Yellow(medium-hard), Red(medium-soft) and Green(soft)



HC151
QUICK FOOT - YELLOW
HC151B
QUICK FOOT - BLUE
HC151W
QUICK FOOT - WHITE

The Quick Foot is quickly becoming an window tinting industry favorite. This tool is thin through the body allowing access behind the 3rd brake light and into tight rear deck and windshield spaces. This tool comes in three hardness ratings for any application. White(hard), Blue(medium) and Yellow(soft)



HC202
THE "ORIGINAL" YELLOW CONQUEROR SQUEEGEE

HC202B
THE BLUE CONQUEROR SQUEEGEE

The Conqueror has been around for over 10 years and is still a staple for almost all automotive window tint installers. Don't be fooled by imitation products with similar names, the Conqueror is the ORIGINAL and still the best. An updated design now fuses the squeegee blade onto the tool body to eliminate the blade tearing away from the body as was common in the original design. The Conqueror's unique design combines a terrific window tint squeegee blade on one side and a pointed hard card tip on the other for pulling back gaskets, chizling film, etc. This window film industry standard comes in the original Yellow blade for most window tint applications as well as a new Blue version that offers an stiffer squeegee blade for high metallic and ceramic installations.



HC1042
THE TITAN SQUEEGEE TOOL

This revised version features additional material to stiffen the blade per installer request. This tool is a whopping 14 3/4 " long to reach those really tough rear deck areas. This tool functions much the same as the loved Conqueror, but comes with a larger body. The rigid body along with a unique design that transfers more pressure to the blade tip allows greater removal of water. In addition, the handle is designed to easily lift both inner and upper door seals. This is one must have tool for any automotive installer. Get one to try today!



HC2008
4" MANGO BONDO CARD WITH FELT EDGE

This is a new take on an old favorite! This 4" Mango Bondo card has a felt edge integrated to make this a terrific tool for high performance window tint heat shrinking. This tool also works great for paint protection film and vinyl graphic installations.



HC2005
SMART CARD MANGO WITH FELT EDGE

This Mango Smart Card will make you the smartest tinter on the block! An integrated felt edge makes this a terrific tool for high performance window tint heat shrinking as well as paint protection film and vinyl graphic installations.



HC2006
REBEL HARD CARD - MANGO WITH FELT EDGE

This Mango Rebel Hard Card comes with a felt edge integrated to make this a terrific tool for high performance window tint heat shrinking as well as paint protection film and vinyl graphic installations.



HC2007
LITTLE FOOT SQUEEGEE - MANGO WITH FELT EDGE

This Mango Little Foot Squeegee comes with a felt edge integrated to make this a terrific tool for high performance window tint heat shrinking as well as paint protection film and vinyl graphic installations.



HS208
SIDE SWIPER SQUEEGEE HANDLE

The famous Side Swiper handle without the Blue Max insert included. This handle uses Side Swiper Replacement Squeegee Blade (HS118-6) sold separately. The Side Swiper is one of the hottest window tint installation tools on the market today. Using an easily replaceable Blue Max blade insert, the Side Swiper is ideal for getting behind 3rd brake lights and in the corner of lower rear deck areas on automotive tint jobs.

HS207
SIDE SWIPER HANDLED SQUEEGEE

The Side Swiper is one of the hottest window tint installation tools on the market today. Using an easily replaceable Blue Max blade insert, the Side Swiper is ideal for getting behind 3rd brake lights and in the corner of lower rear deck areas on automotive tint jobs.



HARD CARD/SQUEEGEES

HARD CARD/SQUEEGEES



HS050
UNGER PRO SQUEEGEE HANDLE

The Unger Pro Handle is an industry standard that has been updated. It now features a rubber-coated, versatile squeegee handle that will work with many different squeegee blade arrangements. From using a Clear Max, Blue Max or Orange Crush to using the standard stainless steel channeled blades with either the soft black rubber insert (for glass prep & cleaning) or Blue Max insert (for film installation) this handle can do it all.



HS050E
UNGER ERGONOMIC SQUEEGEE HANDLE

The Unger Ergonomic Squeegee handle features a spring mechanism for quick blade changing from cleaning to installing window film. This squeegee handle also features a finger indent on top of the handle to give the installer complete control. This handle is for use with steel blade channels HS053-HS056 and either the black rubber inserts for cleaning or blue urethane inserts for window film installation.



HS118-6
6" BLUE MAX SQUEEGEE BLADE ONLY

HS118-8
8" BLUE MAX SQUEEGEE BLADE ONLY

HS118-12
12" BLUE MAX SQUEEGEE BLADE ONLY

HS118-18
18" BLUE MAX SQUEEGEE BLADE ONLY

HS118-120
120" BLUE MAX SQUEEGEE BLADE ONLY

This is replacement Blue Max squeegee blade inserts for stainless steel channels used in the Unger Pro and Unger Ergonomic handles. This squeegee material is superior for window film installation.



HS045
140" BLACK SQUEEGEE BLADE ONLY

HS048
12" BLACK SQUEEGEE BLADE ONLY

HS049
18" BLACK SQUEEGEE BLADE ONLY

This is a replacement soft rubber squeegee blade for stainless steel channels. This squeegee blade material is best for glass cleaning and post window film installation clean-up.



HS053
6" BLACK SQUEEGEE BLADE WITH CHANNEL

HS054
8" BLACK SQUEEGEE BLADE WITH CHANNEL

HS055
12" BLACK SQUEEGEE BLADE WITH CHANNEL

HS056
18" BLACK SQUEEGEE BLADE WITH CHANNEL

These are stainless steel channels with soft black squeegee rubber inserts. These squeegee blades are for use with the Unger Pro (HS050) and Unger Ergonomic handle (HS050E). These squeegee blades work great for glass cleaning and for a final clean-up of the window to remove any smudges left after the window film installation.



HS042
8" ALLOY ERGONOMIC HANDLED SQUEEGEE

This comfortable, ergonomic handle is designed especially for security window film installation. The curved handle applies more pressure to surface of the window film, reducing fatigue and ensuring easier, better installations. The lade is replaceable with either the Security Squeegee (HS041) or Pro Squeegee (HS061) blades.



HS064
8" PRO HANDLE POWER SQUEEGEE

The 8" Pro Handle Power Squeegee comes as a ready-to-use assembly. Used to remove mounting solution for flat glass window film installations. The larger squeegee blade surface increases window film installation speed on larger glass panels.



HS061
8" REPLACEMENT BLADE FOR PRO HANDLE POWER SQUEEGEE

This is the replacement squeegee blade for the 8" Pro Handle Power Squeegee (HS064).



HS062
6" PRO HANDLE POWER SQUEEGEE

The 6" Power Squeegee comes as a ready-to-use assembly. Used to remove mounting solution for flat glass window film installations.



HS1022
STROKE DOCTOR HANDLED SQUEEGEE

The Stroke Doctor handled squeegee is a new and innovative design that enables a window tinter to easily reach into the hard areas of the rear deck. This tool is narrow enough to fit behind many 3rd brake lights making tinting these areas much easier.



HS1022B
STROKE DOCTOR REPLACEMENT SQUEEGEE BLADE

This 6" Blue Max squeegee blade is used in the popular Stroke Doctor window tinting tool (HS1022).



HS063
6" REPLACEMENT BLADE FOR PRO HANDLE POWER SQUEEGEE

This is the replacement squeegee blade for the 6" Pro Handle Power Squeegee (HS062).



TS254

BLUE POWER STROKE SQUEEGEE

The Blue Power Stroke Squeegee is the hardest of the Power Stroke family of turbo squeegees. This squeegee would be a terrific installation tool for metal and ceramic automotive window films. This tool measures 5.7" from tip to tip.

TS255

RED POWER STROKE SQUEEGEE

The Red Power Stroke Squeegee is the medium hardness unit of the Power Stroke family of turbo squeegees. This squeegee would be a terrific installation tool for most automotive window films, thicker vinyl graphics and automotive wraps. This tool measures 5.7" from tip to tip.

TS256

YELLOW POWER STROKE SQUEEGEE

The Yellow Power Stroke Squeegee is the softest of the Power Stroke family of turbo squeegees. This squeegee would be a terrific installation tool for dyed automotive window films, paint protection films, vinyl graphics and automotive wraps. This tool measures 5.7" from tip to tip.



HARD CARD/SQUEEGEES

HARD CARD/SQUEEGEES



8" FUSION HANDLE
The 8" Fusion handle features a light weight composite handle and comfortable cushioned grip to make residential and commercial flat glass applications a snap. (Use with squeegee blade HS259)



8" BLUE MAX BLADE WITH BEVEL
Now available in the larger 8" size, the Blue Max is the original beveled squeegee and still considered by many in the window tinting industry to be the best blade available. The Blue Max is harder than the Orange Crush or the Clear Max making it terrific at removing mounting solution from high performance and ceramic window films. (Use with HS1046 handle)



5" BLUE MAX SQUEEGEE BLADE ANGLE CUT
This Blue Max blade offers all the great features on the standard Blue Max blade with angled sides to get into tight areas. (Use with HS1047 or HS985 handles)



5" BLUE MAX SQUEEGEE BLADE WITH BEVELED EDGE
The Blue Max is the original 5" beveled squeegee and still considered by many in the window tinting industry to be the best blade available. The Blue Max is harder than the Orange Crush or the Clear Max making it terrific at removing mounting solution from high performance and ceramic window films. (Use with HS1047 or HS985 handles)



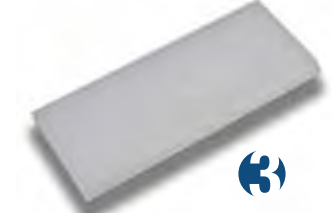
5" FUSION SHORT HANDLE
The 5" Fusion Short Handle features a composite body for light weight and nice cushioned grip like the standard 5" Fusion Handle, but comes with a shorter handle to allow easier use in tight spaces. The shorter length makes it ideal for automotive applications. (Holds HS257, HS258, HS117, HS117A and HS117B squeegee blades)



5" BLUE MAX SQUARED SQUEEGEE BLADE
This Blue Max blade offers all the great features on the standard Blue Max blade with angled sides to get into tight areas. (Use with HS1047 or HS985 handles)



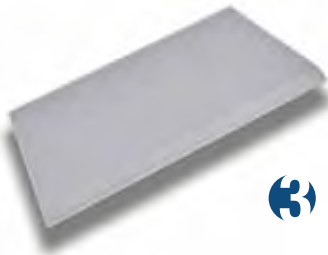
5" FUSION HANDLE
The 5" Fusion Handle features a composite body for light weight and nice cushioned grip for your comfort. Great for high performance automotive films and smaller flat glass jobs. (Holds HS257, HS258, HS117, HS117A and HS117B squeegee blades)



5" SUPER CLEAR MAX SQUEEGEE BLADE
This squeegee blade has softer durometer than the Orange Crush and Blue Max squeegee blades. The softer blade of the Clear Max allows this tool to conform to curved glass making it ideal for back window applications. (Use with HS057, HS1047 or HS985 handles)



BLUE MAX SQUEEGEE BLADE WITH INTEGRATED HANDLE
Ready-to-use handled installation squeegee uses an Angled Blue Max Blade (HS117A) and specially modified Unger Pro handle that eliminates the latch on the underside of the handle. The modified handle is not available for sale but replacement blades can be purchased separately as HS117A. Because of the handle modification, this unit is sold as is.



5" SUPER CLEAR MAX SQUEEGEE BLADE WITH ANGLE CUT
This squeegee blade has softer durometer than the Orange Crush and Blue Max squeegee blades and combines an angled edge cut to reach into tighter spaces. The softer blade of the Clear Max also allows this tool to conform to curved glass making it ideal for back window applications. (Use with HS057, HS1047 or HS985 handles)



THOR'S HAMMER
The Thor's Hammer is strongly recommended when installation of 6 mil and greater security window film is being installed. This tool allows for the window film installer to gain extra leverage with a stiffer squeegee blade which assists in the removal of mounting solution with thicker window films. Removal of the maximum amount of mounting solution will assist in decreased drying times.



5" BLUE MAX SQUARED NARROW SQUEEGEE BLADE
When dealing with safety window films of 6 mil or greater, it is imperative that the squeegee blade has very little flex to facilitate adequate mounting solution removal. The narrow design allows less squeegee blade to protrude from the handle which serves to stiffen the blade. This Blue Max blade was designed specifically for these safety film applications and should be considered a must for any substantial security window film work. (This blade is specifically designed for use in HS1006 handle)



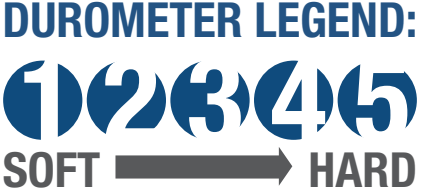
5" ORANGE CRUSH / FUSION SQUEEGEE
The Orange Crush blade is a nice durometer for removing mounting solution from all types of film applications while remaining supple enough to conform to glass curvature. (Use with HS057, HS1047 or HS985 handles)



5" ORANGE CRUSH / FUSION ANGLED
All the great features of the standard Orange Crush blade with angled edges to get into tight areas. (Use with HS057, HS1047 or HS985 handles)



8" ORANGE CRUSH / FUSION SQUEEGEE
Same great Orange Crush but in a larger size to tackle flat glass applications. (Use with HS1046 handle)



HARD CARD/SQUEEGEES

HARD CARD/SQUEEGEES



HS205
BULLDOZER AUTOMOTIVE SQUEEGEE

The Automotive Bulldozer handled squeegee allows a tinter to get at those hard to reach areas, such as behind speakers & brake lights in a the rear deck areas and into the bottom of very low angle rear windows. Features a 6" squeegee blade and is 15" in overall length.



HS206

BULLDOZER FLAT GLASS SQUEEGEE
The Flat Glass Bulldozer handled squeegee features extended reinforced ribs on the back side for extra rigidity and leverage. This squeegee is terrific for squeegeeing window film tucked behind frames & columns on flat glass jobs where there is not enough space to reach in with a traditional squeegee handle. Includes a 6" squeegee blade and is 15" in overall length.



TS1026
3.5" YELLOW TURBO INSTALLATION SQUEEGEE

This tube squeegee is the industry standard. With a great medium hardness and slick surface, this squeegee removes water well while gliding effortlessly across the film.



TS236
5.5" YELLOW TURBO INSTALLATION SQUEEGEE BLADE ONLY

This yellow turbo / tube squeegee is a window tint industry standard. With a great medium hardness and slick surface, this squeegee removes water well while still gliding effortlessly across the window film.

Note: This squeegee comes as a blade only. If you would like the white handle, please order TS235.



TS235
5.5" YELLOW TURBO INSTALLATION SQUEEGEE

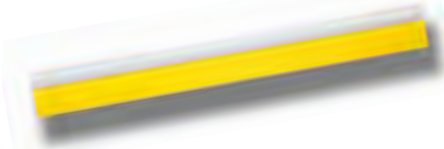
This yellow turbo / tube squeegee is a window tint industry standard. With a great medium hardness and slick surface, this squeegee removes water well while still gliding effortlessly across the window film.



TS2004
18 1/2" GREEN TURBO INSTALLATION SQUEEGEE BLADE ONLY

The popular turbo style squeegee is now available in a softer, green variety. This softer turbo has proven to be terrific for paint protection film installations. This can also be used on thin, dyed automotive window tint as the softer durometer will make it more difficult to crease the film.

This turbo comes in the 18.5" length to allow you to cut it into convenient shapes and sizes for your installation preferences. Try one today!



TS145
18 1/2" YELLOW TURBO INSTALLATION SQUEEGEE

This yellow turbo / tube squeegee is a window tint industry standard. With a great medium hardness and slick surface, this squeegee removes water well while still gliding effortlessly across the window film.



TS150
18 1/2" RED TURBO INSTALLATION SQUEEGEE

TS152
5" RED TURBO INSTALLATION SQUEEGEE

Fast becoming an window film industry favorite, the red turbo squeegee has all the great attributes of the yellow turbo squeegee in a slightly harder material. This makes it a terrific choice for metallic and ceramic automotive window tint installations.



TS147
18 1/2" YELLOW TURBO INSTALLATION SQUEEGEE BLADE ONLY

This yellow turbo / tube squeegee is a window tint industry standard. With a great medium hardness and slick surface, this squeegee removes water well while still gliding effortlessly across the window film.

Note: This squeegee comes as a blade only. If you would like the white handle, please order TS145.



TS119
4" BLACK TURBO CLEANING SQUEEGEE

TS120
9" BLACK TURBO CLEANING SQUEEGEE

TS121
28" BLACK TURBO CLEANING SQUEEGEE

These squeegees should primarily be used for cleaning a window surface prior to a window tint installation. They are very soft and adhere to the glass surface well for removal of all water and debris. However, because of this softness, they do not make good window tint or graphic installation squeegee tools as they will leave too much mounting solution trapped under the surface of the film.



TS146
28" BLACK TURBO CLEANING SQUEEGEE - (BLADE ONLY)

These squeegees should primarily be used for cleaning a window surface prior to a window tint installation. They are very soft and adhere to the glass surface well for removal of all water and debris. However, because of this softness, they do not make good window tint or graphic installation squeegee tools as they will leave too much mounting solution trapped under the surface of the film.

DUROMETER LEGEND:
1 2 3 4 5
SOFT → HARD



SCRAPER TOOLS



SR1007
4" PERSONNA SCRAPER BLADES
(100 PACK)
Carbon steel 4" scraper blades designed to be used in most 4" scraper handles. (100 Pack)



SR103
4" ALLWAY SCRAPER WITH 6" HANDLE
This is a really nice 4" Allway scraper with a compact 6" handle for working in tight areas. (Uses SR105 & SR1007 blades)



SR210
3" TRIUMPH MINI-SCRAPER
A smaller, 3" version of the Triumph scraper designed to get into small areas and corners. (Uses Triumph blades SR211)



SR1023
4" ALL PRO SCRAPER
This All Pro 4" scraper has an adjustable head as well as an adjustable knob for two handed use. Blades can be stored inside the handle. (Uses SR105 blades)



SR211
3" TRIUMPH MINI-SCRAPER BLADES
(10 PACK)
These 3" blades are designed specifically to be used in the 3" Triumph Mini-Scraper. (10 Pack)



SR105
4" SCRAPER BLADES (10 PACK)
Carbon steel 4" scraper blades designed to be used in most 4" scraper handles. (10 Pack)



SR103
4" ALLWAY SCRAPER WITH 12" HANDLE
This is a nice 4" Allway scraper designed with a 12" handle for extra leverage when working on tough window film removals. (Uses SR105 & SR1007 blades)



SR994
4" LIDCO PLASTIC BIG SCRAPER BLADE
This jumbo size plastic razor blade is designed to enable you to remove window film, vinyl graphics or adhesive on delicate surfaces in a snap.

1

2

3

4

5

6

7



SCRAPER TOOLS

SCRAPER TOOLS



SR106
6" TRIUMPH HEAVY DUTY SCRAPER
This heavy duty version of the popular 6" Triumph scraper is ideal for tough window film removal jobs. (Uses Triumph SR110 blades)



SR107PC
6" TRIUMPH SLIDE COVER SCRAPER
This is the new and improved version of the 6" slide covered Triumph scraper. With a bigger button and smoother action, the cover easily opens and closes with no hassle. No more fumbling with a separate blade cover, this design is safer and more convenient, especially when doing ladder work. (Uses Triumph blades SR108 & SR108SS)



SR107A
6" TRIUMPH ANGLED SCRAPER
This is essentially the standard Triumph 6" Scraper with a 30 degree angled head for better ergonomics and to apply more leverage. (Uses Triumph blades SR108 & SR108SS)



SR107
6" TRIUMPH SCRAPER
This is the standard Triumph 6" Scraper that is used cleaning and scraping. This scraper comes with a safety cover for the blade when not in use. (Uses Triumph blades SR108 & SR108SS)



SR108
6" TRIUMPH SCRAPER BLADES (25 PACK)
These are standard, carbon replacement blades for any 6" Triumph Scraper. (25 Pack)



SR108SS
6" TRIUMPH STAINLESS SCRAPER BLADES (25 PACK)
These stainless steel Triumph scraper blades are designed to be used with any 6" Triumph scraper. (25 Pack)



SR110
6" TRIUMPH HEAVY DUTY SCRAPER BLADES (10 PACK)
These blades are thicker and designed for tough removals. (For use with Triumph scraper SR106)



SR983A
6" TRIUMPH SOFT HANDLED ANGLED SCRAPER
Coupling the 30 degree angled head for better ergonomics and increased leverage with the new soft grip handle. This updated Triumph scraper is sure to be your new favorite. (Uses Triumph blades SR108 & SR108SS)



SR983
6" TRIUMPH SOFT HANDLED SCRAPER
Same great design of the standard Triumph scraper that you have always loved, but with a new soft grip handle for increased comfort. (Uses Triumph blades SR108 & SR108SS)



SR212
1" BLADE AID SCRAPER
Basic plastic mini scraper for small jobs. (Uses any standard 1" single edge razor blade)



SR140
1" SINGLE EDGE #9 BLADES (100 PACK)
.009" (#9) carbon 1" single edge razor blades. (100 Pack)



SR109
1" HANDLED CLIP SCRAPER
A very effective scraper for reaching small or hard to reach areas. The blades snap in and out of the clip holder easily for a fast blade change. (Uses any standard 1" single edge razor blade)



SR109S
1" HANDLED CLIP SCRAPER WITH THUMB SCREW
Very similar to a standard handled clip scraper. However, this tool comes with a thumb screw to hold the blade tighter if more scraping force is required. (Uses any standard 1" single edge razor blade)



SR140-12
1" SINGLE EDGE #12 BLADES (100 PACK)
.012" (#12) carbon 1" single edge razor blades. These blades have a slightly thicker design than the .009" (#9) blades to reduce flex.



SR137
1" GEM SINGLE EDGE STAINLESS STEEL BLADES (100 PACK)
GEM brand stainless steel, single edge razor blades. (100 Pack)



SR138
1" HEAVY DUTY RETRACTABLE RAZOR SCRAPER
This durable 1" razor scraper features a convenient retractable blade to stow it safely when not in use. The small design makes it ideal for small jobs. (Uses any standard 1" single edge razor blade)



SR139
1" PLASTIC SINGLE EDGE RAZOR BLADES (100 PACK)
Plastic razor blades are terrific for removing window film, vinyl graphics, adhesive or dirt from easily damaged surfaces such as glass with defroster or radio lines. (100 Pack)



SPRAYERS/CLEANING SUPPLIES



A F W P CL090
32 OZ. SPRAYMASTER TRIGGER SPRAYER

This is a chemical resistant 32 oz. sprayer that comes with a 5-year manufacturer's guarantee. Comes with a white labeling box to keep your chemicals organized. It does not get nicer than this in a trigger sprayer.



A F CL085
WHITE GLASS SAFE SCRUB PAD

The white scrub pad is the standard cleaning pad most window tinters use. It is safe for use on glass and is great for cleaning any contaminants from the glass surface prior to window film installation. Please note that the pad only looks discolored in the photos so that it shows up better against a white background. The pads you will receive will be whitish cream in color.



A F CL071
SUPER PREP "VIRTUALLY LINT FREE" TOWELS

Prep for your window tint job professionally with these Super Prep cloth like towels. Conveniently packaged with 300' in a self dispensing box. Increase the cleanliness of your next window film job by trying a box of Super Prep towels today.



A F P CL096
2 QUART POLY 2 PUMP SPRAYER

The original and still one of the best, the Poly 2 Sprayer is a window tint industry favorite. Many have tried to dethrone the Poly 2, but the ergonomic design, great pressure retention and durability make it the #1 choice for window tinters everywhere.



A F CL085THK
THICK WHITE GLASS SAFE SCRUB PAD

This thicker white scrub pad is made of the same great, glass safe material as the original, but in a thicker pad for greater durability. This pad is safe for use on glass and is great for cleaning any contaminants from the glass surface prior to window film installation. Please note that the pad only looks discolored in the photos so that it shows up better against a white background. The pads you will receive will be whitish cream in color. It is shown in the picture beside a standard pad so that you can see the difference in thickness between the two pads.



A F W P CL098N
ADJUSTABLE TRIGGER SPRAYER NOZZLE (NOZZLE ONLY)

As a result of a major trigger sprayer supplier going out of business, we have had to change to this new unit. We tested many trigger sprayers from other manufacturers before deciding on this very nice universal trigger head that fits both 16oz. and 32oz. bottles. Please Note: The dip tube on the replacement trigger unit will need to be trimmed a bit shorter to fit the smaller bottles perfectly.



1
2
3
4
5
6
7



A F W P CL1008
48 OZ. IMPACT JR. PUMP-UP SPRAYER

The Impact Sprayer's great design and overall durability have this pump-up sprayer becoming a window film industry favorite.



A F CL101-H
5 GALLON STAINLESS STEEL SPRAYER WITH 25' COILED HOSE

This deluxe pressurized sprayer holds up to 5 gallons of mounting solution in a stainless steel tank. This favorite of residential and commercial window tinters everywhere features a coiled 25' hose to enable you to reach a large area without having to move the tank. Operation is simple. Just fill the tank with desired solution and pressurize with air from any compressor. A relief valve will prevent over-pressurization of the unit. Once you try a 5 Gallon Stainless Sprayer, you will never want to use a trigger or pump sprayer again.



A F W P CL101-H
5 GAL. STAIN. STEEL SPRAYER REPLACEMENT NOZZLE ONLY
This is a direct replacement nozzle for the 5 Gallon Stainless Steel Sprayer shown below.



A F W P CL101-H
25' REPLACEMENT HOSE COMPLETE FOR 5 GALLON STAINLESS STEEL SPRAYER
This is a complete replacement hose and nozzle set from our popular 5 Gallon Stainless Steel Sprayer shown below. If you damaged or broke the hose on your unit in any way, this is a direct replacement to the original.



A F CL102-OP
PUMP ASSEMBLY COMPLETE FOR SMITH 3 GALLON SPRAYER
This is a complete replacement pump assembly for the popular Smith 3 Gallon Sprayer.



A F CL102
3 GALLON PUMP-UP SPRAYER WITH 13' HOSE
This bottles convenient 3 gallon design and 13' hose make it perfect for either residential/commercial or automotive window film installations. This bottle also features a Smith Sprayer Nozzle with a brass fan-type spray tip. Replacement pump assemblies for this unit are available below.



A F CL102P
REPLACEMENT PUMP ASSEMBLY FOR 3 GALLON PUMP-UP SPRAYER
This is the replacement pump assembly complete for our popular 3 Gallon Pump-Up Sprayer with 13' Hose. If your sprayer does not pump up quite as quickly as it once did, try this replacement assembly to make it as good as new.



A F W P CL1067
MERCURY PRO PLUS TRIGGER SPRAYER

The Mercury Pro Plus Trigger Sprayer is completely different to what we have seen in the window film industry. The signature feature of this awesome sprayer is that the trigger outputs water on the pull and the release! That's right, it sprays twice for each pull giving you twice the coverage with half the effort. You owe it to yourself and your tired hands to try the new Mercury Plus Pro Trigger Sprayer today!



A F W P CL2012
REPLACEMENT HOSE SPRAYER NOZZLE
This is a great replacement hose nozzle that everyone love. A hose clamp with a tapered body make this nozzle adaptable to nearly any sprayer. Give on a try today!



A F W CL921
JIFFY J2W STEAMER

The Jiffy J2W Steamer is a commercial grade steamer that is impact resistant and uses 1300 watt heating element. Heats up in 2 minutes with 2 hours of steaming from a full bottle. This is a must have tool for removing window film and adhesive from back windows where defroster and radio lines can be damaged by trying to remove baked on film. Steamers are increasingly being used to assist in paint protection film installation as well. The Jiffy J2W features include: -Quick 2 minute Heat Up time -All Brass Couplings -1300 Watt Heating Element -50/60 Hertz Electrical System -Auto Shut off system for Safety -On/Off Switch -Cleans Surfaces with the Power of Steam -Made in the USA (Note: This is a 120 volt model. 220 volt models are available as a special order)



A F W CL921-B
REPLACEMENT FUSE FOR JIFFY STEAMER
This is a replacement fuse for the popular Jiffy Steamer.



A F W CL921-C
REPLACEMENT WATER BOTTLE FOR JIFFY STEAMER
This is a replacement water bottle for the popular Jiffy Steamer.

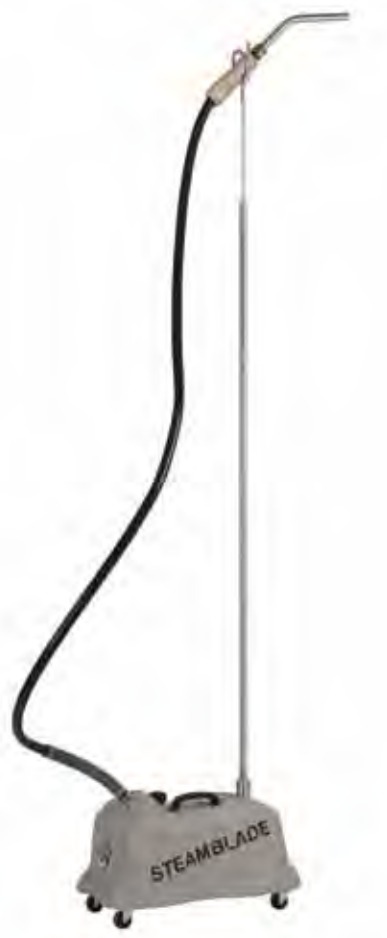


A CL209
THE SCRUBBER
The Scrubber measures in at over 12" long to allow you easy access into the tightest of areas. This is a must have tool for most automotive window tinters. The scrub pad is able to be removed and replaced with white scrub pads as seen below. Avoid the visit to the chiropractor by putting a Scrubber in your tool box today!



SPRAYERS/CLEANING SUPPLIES

1
2
3
4
5
6
7



A F P CL2015

JIFFY J4000W STEAMBLADE STEAMER

Zola Tools is pleased to offer the SteamBlade by Jiffy Steamer. The SteamBlade is an innovative product designed to simplify the removal of window film, vinyl wrap and lettering. With the swipe of the SteamBlade, the warm, moist steam quickly and safely unbinds the glue from the window, simplifying this once tedious task. The SteamBlade will allow you to remove window film, vinyl wrap or lettering in a fraction of the time of conventional methods. Put down the razor and reach for the Steam. Quickly remove window film, vinyl wrap and lettering without chemicals, razor blades or the frustration commonly associated with this tedious task! Put Down the Razor and Pick Up the Steam! -Quick 15-minute heat-up time to PREHEAT mode, allowing you to maintain the steamer's temperature until you need it -Go from PREHEAT mode to full STEAM power in just 2 minutes -Flexible 7.5" hose for easy maneuverability on the job -Angled 9" aluminum steam head concentrates steam into a targeted area for precise removal -Large 1 gallon internal water reservoir provides 2 hours of continuous steam before refilling -Easily view water levels and sediment buildup at a glance with the built-in sight gauge -Comes with 1 pair size LARGE protective gloves -Solid Die-cast outer Housing for Durability -All Brass Couplings -1,500 Watt Heating Element -50/60 Hertz Electrical System -On/Off Switch -304 Stainless Steel Internal Boiler Tank -Preheat and Steam Settings -Auto Shut-off for Safety -Best in the industry 3-year warranty -Manufactured in the USA



P CL922

PRESSURE ON DEMAND (P.O.D.) STEAMER

The Pressure on Demand (P.O.D.) system is specifically designed to make paint protection film installations much easier. Designed to release the precise amount of steam at a temperature that will not burn you or harm the paint protection material. The steam makes the material more pliable to enable the film to comply to difficult contours. This steamer also gives you the ability to correct mistakes without having to waste a valuable piece of film. Check out the videos below. If you are a paint protection film installer, this is a must have tool. The P.O.D. works on all brands on paint protection films.



INSTALLATION AIDS



A **AD075**
YELLOW FILM MARKER

This Yellow Film Marker is handy for three basic purposes: 1) Marking window film prior to installation on windows with unusual shapes (arches, trapezoids, etc.) which must be cut to approximate shape before the final "lay-up". 2) Circling a contaminate (hair or fiber) before pulling back the film to remove it. 3) Marking tint edges to check for glass movement on side roll-ups during the trimming process. Markings quickly wipe away when desired.



A **F** **AD076**
WINDOW FILM OPAQUER - THIN POINT



A **F** **AD077**
WINDOW FILM OPAQUER - BROAD POINT

This popular window tinting tool is used by installers to hide small mistakes in trimming which cause a light gap at the edge of the window film.



A **AD078**
BLACK WINDOW GUIDE FELT 1.5" X 50FT



A **AD078-75**
BLACK WINDOW GUIDE FELT .75" X 50FT

As more automotive manufacturers use hard window guides for the door glass, it has become important to install guide felt to guard against the guides scratching the installed film. In two different widths for any installation, this is a must have for any automotive tinter. (Comes in 50' Rolls)



A **AD130**
GASKET WIZARD TINTING TOOL

The Gasket Wizard is used by automotive window tinters to pull back gaskets on roll down windows. This allows them to easily slide the film in place and squeegee it out with the gaskets out of the way. Give a set a try today and find out why so many tinters rely on the Gasket Wizard every day.



A **AD132**
GASKET HOOK TOOL

This convenient tint tool is a must have for any installer's pouch. The Gasket Hook Tool allows an installer to pull back rubber gaskets on door windows in order to tuck the film below the seal.



A **F** **AD157**
1/2" X 150' BLACK OUT TAPE

A **F** **AD158**
1" X 150' BLACK OUT TAPE

A **F** **AD159**
1 1/2" X 150' BLACK OUT TAPE

Black Out Tape is used to hide light gaps at the edges of window film applications. This product is available in 3 different widths to fit most any application. (Product comes in 150 foot rolls)



A **F** **W** **P** **AD176**
BLACK WAIST APRON

This waist apron is the industry standard with two large 8.5" x 8.5" pockets with a small 2.5" x 8.5" pocket in the center for smaller items like your knife. This apron also features an accessory loop on each side to hold items like squeegee handles conveniently.



A **F** **W** **P** **AD182**
36" ALLOY STRAIGHT-EDGE RULER

This 36" alloy, commercial grade straight-edge ruler has precise measurement markings on both edges so that you can make the perfect mark or cut every time.



A **F** **W** **P** **AD183**
18" ALLOY STRAIGHT-EDGE RULER

This 18" alloy, commercial grade straight-edge ruler has precise measurement markings on both edges so that you can make the perfect mark or cut every time.



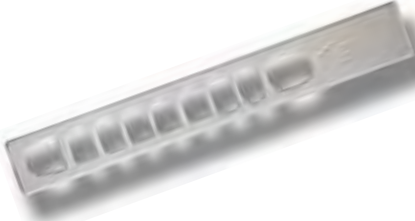
A **AD186**
8" ALLOY CIRCLE TEMPLATE TRIANGLE WITH 30 & 60 ANGLES

This 8" alloy circle template features a 30 degree and 60 degree angle as well and 20 different circles from a smallest of 1/32" to the largest of 31/32". This item from Lance will enable you to make the perfect cut every time.



A **AD187**
12" ALLOY CIRCLE TEMPLATE TRIANGLE WITH 45 & 90 DEGREE ANGLES

This 12" alloy circle template features a 45 degree and 90 degree angle as well and 26 different circles from a smallest of 1/16" to the largest of 1 3/8". This item from Lance will enable you to make the perfect cut every time.



A **AD188**
WINDSHIELD WIZARD REAR VIEW MIRROR TEMPLATE TOOL

Measuring 18" long, this convenient window tinting tool has 9 modern rear view mirror cut out shapes for precise film trimming and no light gaps.



F **AD190**
FIVE WAY TRIM GUIDE - GRAY



F **AD190BLACK**
FIVE WAY TRIM GUIDE - BLACK



F **AD190WHITE**
FIVE WAY TRIM GUIDE - BLACK

Five Way Trim guides have a 10" edge and are approximately 1/16" thick to enable the tinter to achieve a precise edge gap on flat glass installations.



A **AD194**
GASKET PUSH STICK

The Gasket Push Stick is a tinter's favorite. Sometimes called a Dog Bone, this tool is used for pushing down door window gaskets to assist in film installation on roll down windows.



INSTALLATION AIDS



A F **FS1002T**
CLEAN CUT BOX SLITTER
ACCESSORY TRAY

This tray is designed to hold any size Clean Cut Box Slitter and allow you to mount to a ladder for convenient use of the slitter.



A F **FS1002-36**
A F **FS1002-48**
A F **FS1002-60**
A F **FS1002-72**
CLEAN CUT BOX SLITTER

A basic alternative to an expensive film slitting machine. This system uses the film box as an integrated part of the slitter. The cutter bar rides the surface of the box with an adjustable magnetic cutting head. In addition, the cutting bar is marked with both metric and imperial measurements to allow quick width adjustments for the cut. All 4 standard film size cutting bars are available. (36", 48", 60" and 72") Cutter head is sold separately.



F **FS941**
1/8" THICK SHIM FOR 3" FILM HAN-
DLER ROLLER ASSEMBLIES (1 SHIM)
This shim is designed to eliminate side to side film movement during the slitting process. This shim is 1/8" thick and designed to be used with a 3" Roller Assembly on the Film handler window film cutting machine. We apologize, but this item is temporarily out of stock.



A F **FS821**
ALLOY CHANNEL / BOX MOUNTED
WINDOW FILM CUTTING HEAD

This box or channel mounted blade holder is designed to be used with the 72" Box Slitter Alloy Channel (FS822) or it can mount directly to the box. This unit uses the traditional 13pt blades designed for most window tinting knives. When using the alloy channel, this cutter head will mount to the channel via a tightening screw on the side. This allow the film box to be used as an economical window film slitting machine. This tool is also commonly mounted directly onto the film box. Just insert the film box into it's own top and mount the slitter to the two portions of cardboard (film box and top). This eliminates the need for the channel. This method works, but it is not as stable as having the cutter head mounted to the alloy channel.



F W **FS1002CH**
CLEAN CUT BOX SLITTER CUTTER
HEAD ASSEMBLY

A basic alternative to an expensive film slitting machine. This system uses the film box as an integrated part of the slitter. The cutter bar rides on the top surface of the box with an adjustable magnetic cutting head. In addition, the cutting bar is marked with both metric and imperial measurements to allow quick width adjustments for the cut. All 4 standard film size cutting bars are available and the cutter head is sold separately.



A F **FS822**
72" BOX MOUNTED ALLOY WINDOW
FILM SLITTER CHANNEL

72" aluminum U-channel that slides over the edge of a window film box-top to serve as a straight edge when making horizontal cuts (across the web width) after pulling film out to desired length. This channel also serves as a solid mounting platform for the Channel Mounted Slitter Head (FS821), which allows film slitting to be done vertically as the film is being pulled off the roll. The alloy construction of the channel enables you to cut it down to fit smaller film widths if desired. This handy device is easy to transport and is much less expensive than other window film cutters.



F **FS940**
FILM HANDLER REPAIR KIT

This convenient kit comes with the parts most often in need of replacement on a used Film handler. (2 Plastic Washers, 2 Springs, 2 Adjustment Knobs and 1 Brake Screw)



F **FS942**
1/4" THICK SHIM FOR 3" FILM HAN-
DLER ROLLER ASSEMBLIES (1 SHIM)
This shim is designed to eliminate side to side film movement during the slitting process. This shim is 1/4" thick and designed to be used with a 3" Roller Assembly on the Film handler window film cutting machine.



F **FS910**
60" FILM HANDLER

The Film handler is the standard in film slitting / handling devices. This machine will help you minimize your waste and improve your efficiency enabling you to make more money per job. This cutter will make vertical and horizontal cuts on any roll up to 60" in width. Available accessories enable you to utilize this machine for nearly any type of window film. This slitter can easily be mounted to a ladder, wall, work van, etc. to enable you to work at eye level and keep the film clean and off the ground. Loaded with features to make any film cutting / slitting job a snap. This is truly one window film tool that everyone loves.



F **FS943**
FILM HANDLER CUTTER HEAD
REPLACEMENT BLADES (20 PACK)
Pack of replacement cutter head blades for the popular Film Handler window film cutting system.



F **FS913**
FILM HANDLER 12" RISE ROLLER
ASSEMBLY FOR 6" CORES (1 PAIR)
6" core, 12" rise roller assembly pair for the Film Handler window film cutting machine. This pair of roller assemblies is typically needed for safety and security window films with larger core diameters.



F **FS912**
FILM HANDLER COMPLETE CUTTER
HEAD ASSEMBLY

Direct replacement for the complete cutter head assembly on a Film Handler window film cutting machine.



F **FS1012**
1/4" THICK SHIM FOR 6" FILM HAN-
DLER ROLLER ASSEMBLIES (1 SHIM)

This shim is designed to eliminate side to side film movement during the slitting process. This shim is 1/4" thick and designed to be used with a 6" Roller Assembly on the Film handler window film cutting machine.



F **FS986**
FILM HANDLER CUTTING HEAD
BLADE HOLDER

Replacement blade holder for the Film Handler window film cutting machine. This is a replacement for the blade holder only. This will attach to the cutter head assembly. If the complete cutter head assembly is needed, please refer to item FS912.





AD191
THE EDGE TRIMMING & GASKET TOOL

This innovative trim guide features an angled handle to allow the hand holding the guide to be positioned out of the way of the knife holding, trimming hand. This unique design feature also enables The Edge to be used in automotive tint jobs as an inexpensive way to pull back window gaskets on roll down windows.



AD979
KEVLAR HEAT RESISTANT GLOVES (1 PAIR)

Many window tinters like to work the film with their hands while heat forming. These gloves allow you to work the film with your hands and the heat gun in close proximity by protecting your hands from the heat. (1 Pair)



AD972
ADDOTRIX DOTRIX VINYL DOT MATRIX COVER

If you are tired of fighting stubborn dot matrix areas on back glass, then consider using DOTRIX to cover the matrix. This product installs easily and can be trimmed to mate perfectly with the film for that finished appearance your customers are looking for. Comes in a convenient 16" x 50' roll.



AD981
"DO NOT ROLL DOWN" STICKERS (1000 COUNT)

Tired of re-doing side windows that were ruined because a customer rolled the window down too soon? If so, then start using these friendly reminder stickers with each job. Just place one of these stickers over each window switch to remind your customer to wait on the roll down. The stickers feature a low tack adhesive for easy removal by the customer without leaving a sticky residue.



AD972
ULTRASONIC DIGITAL TAPE MEASURE

This tool is an easy to use distance estimator, using ultrasonic sound waves (beyond human hearing) to make measurements with one push of a button. It is compact and easy to use. Its narrow ultrasonic beam measures distances up to 50 feet and is accurate within 1 inch. The rugged construction ensures reliable performance even after a drop-test from 3 feet. Features: Compact (Fits in Purse or Pocket) Accurate: Within 1 inch from 2 Feet to 43 Feet (0.6 to 13 Meters) Easy to use. Just push a button to measure. Internal Lifetime Lithium Battery LCD Display Displays Results in either Feet or Meters (Switch Selectable) Specifications: • Size: 4 1/2" High X 1 7/8" Wide X 7/8" Deep (111.5 mm X 47.2 mm X 21.5 mm) • Weight: 2.2 ounce (62 grams) • Ultrasonic Operating Frequency: 50 kHz • Battery: Lithium, Over 100,000 measurements and 10 Years Life • Case: ABS Black Plastic



CUTTER
SAFETY WINDOW FILM ATTACHMENT CUTTING TOOL

This great cutting tool allows you to accurately cut flexible anchoring profile in a variety of ways in order to give a clean installation in the corners. A must have tool for anyone that plans on installing flexible anchoring profiles.



FIBER APPLICATOR

This urethane attachment application tool allows you to push firmly against the taped edges of flexible anchoring to provide a smooth adhesion down the entire edge. This tool works great for stiffer anchoring systems when more pressure from the tool is desired.

GSS-50
(GSS) GLASS SECURITY SEAL (50 FOOT)

The Pentagon Protection Glass Security Seal attachment system integrates the window gasket with the attachment profile. This design increases the strength of the system by further tying the glass, frame and film together. In addition, the integrated gasket allows for perfect alignment of the attachment during install. The GSS comes in two different profiles both in a 50' roll: GSS-R is standard at 1 3/4" wide. This profile looks flat from the exterior; The GSS-F profile is 1 15/16" wide. This attachment is made using a single extrusion TPE that is mated with a 3M high bond tape that is heat applied to the attachment during the manufacturing process for increased bond. *ALL PENTAGON PROTECTION ATTACHMENT SYSTEMS SHIP FROM OUR CALIFORNIA WAREHOUSE*



SCRAPER/APPLICATOR

This attachment squeegee applicator allows the installer to apply the appropriate pressure to the taped portion of the attachment in one smooth gliding motion. The ergonomic design along with the specially formed squeegee blade make laying down the attachment a snap.

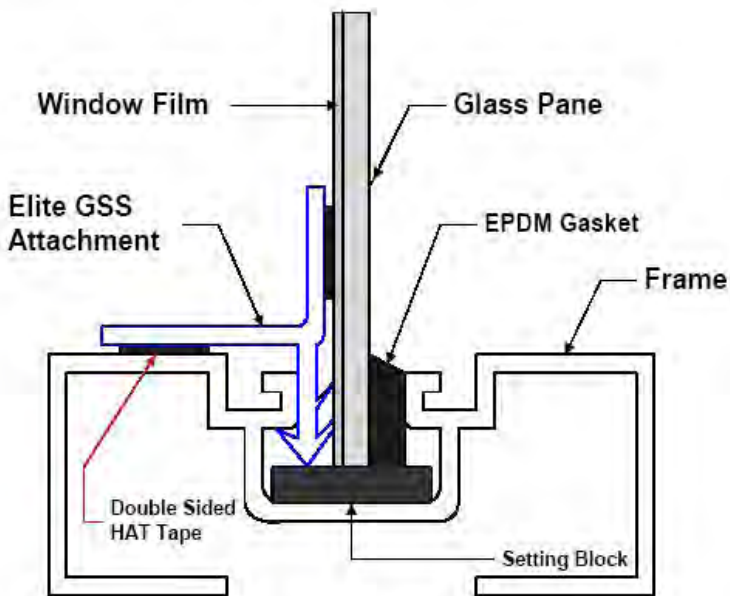


ROLLER-1.75
ATTACHMENT 1 3/4" WIDE ROLLER APPLICATOR

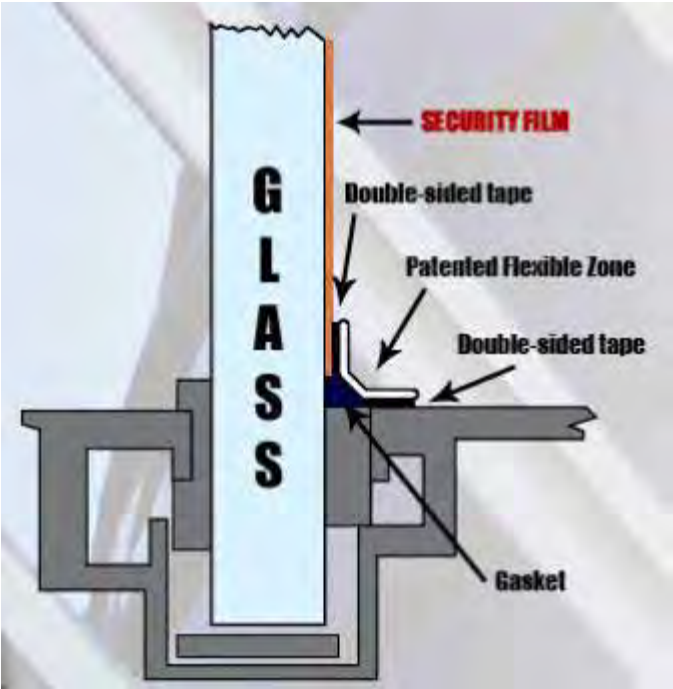
This roller tool allows the installer to roll the taped edges of the flexible anchoring to provide a smooth, consistent adhesion with no air gaps. This tool comes with a 1.75 inch roller.

ROLLER-2
ATTACHMENT 2" WIDE ROLLER APPLICATOR

This roller tool allows the installer to roll the taped edges of the flexible anchoring to provide a smooth, consistent adhesion with no air gaps. This tool also features a universal threaded handle which enables the use of an extension handle.



GSS™ Glass Security Seal Attachment



F PWS-SM50
ADVANCED ELITE SMALL
(50' ROLL)

F PWS-SM100
ADVANCED ELITE SMALL
(100' ROLL)

The Pentagon Protection Advanced Elite Small (PWS-SM) attachment system comes in a narrow size for windows that do not have a large enough set-back for a standard attachment system to adhere without hanging over the inner frame. The PWS-SM comes in both a 50' or 100' roll and measures 1 3/8" (32mm) wide. The flexible membrane between the tape measures 1/8" wide. This attachment is made using a single extrusion TPE that is mated with a 3M high bond tape that is heat applied to the attachment during the manufacturing process for increased bond.

F PWS-S50
ADVANCED ELITE STANDARD
(50' ROLL)

F PWS-S100
ADVANCED ELITE STANDARD
(100' ROLL)

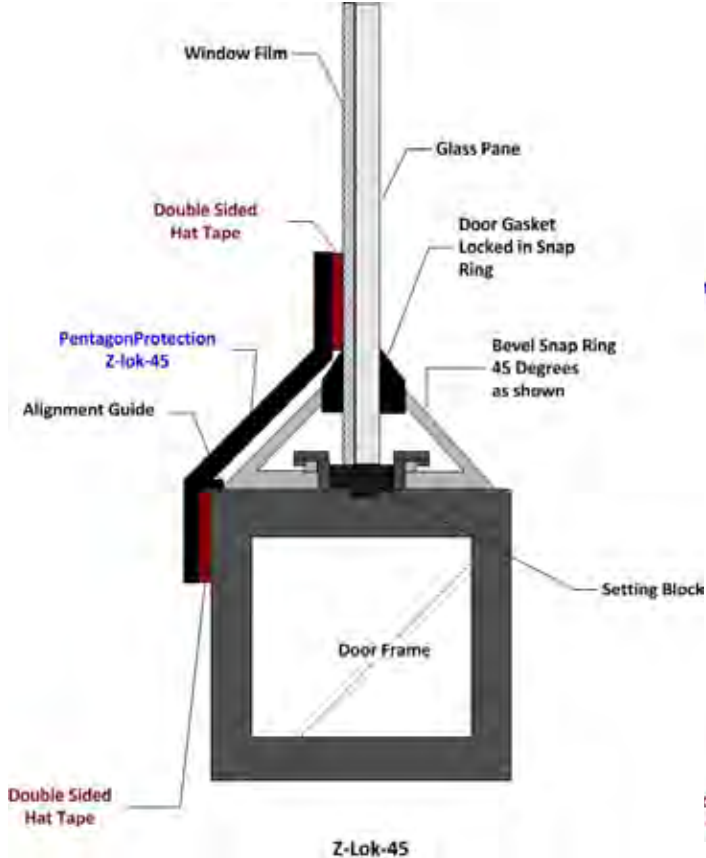
The Pentagon Protection Advanced Elite Standard (PWS-S) attachment system comes in a great size for standard windows. Large enough to fit over most gasket systems, the slimmer line profile offers an aesthetically pleasing system that gets the job done. The PWS-S comes in both a 50' or 100' roll and measures 1 5/8" (42mm) wide. The flexible membrane between the tape measures 3/8" wide. This attachment is made using a single extrusion TPE that is mated with a 3M high bond tape that is heat applied to the attachment during the manufacturing process for increased bond.

F PWS-L50
ADVANCED ELITE LARGE
(50' ROLL)

F PWS-L100
ADVANCED ELITE LARGE
(100' ROLL)

The Pentagon Protection Advanced Elite Large (PWS-L) attachment system is wider to allow firm attachment on larger frame insets or on window units where the gaskets are larger. The PWS-L comes in both a 50' or 100' roll and measures 1 15/16" (48mm) wide. The flexible membrane between the tape measures 1/2" wide. This attachment is made using a single extrusion TPE that is mated with a 3M high bond tape that is heat applied to the attachment during the manufacturing process for increased bond.

ALL PENTAGON PROTECTION ATTACHMENT SYSTEMS SHIP FROM OUR CALIFORNIA WAREHOUSE



F Z-LOK-45
ALL FLEXIBLE 45 DEGREE Z-LOK (40' ROLL)

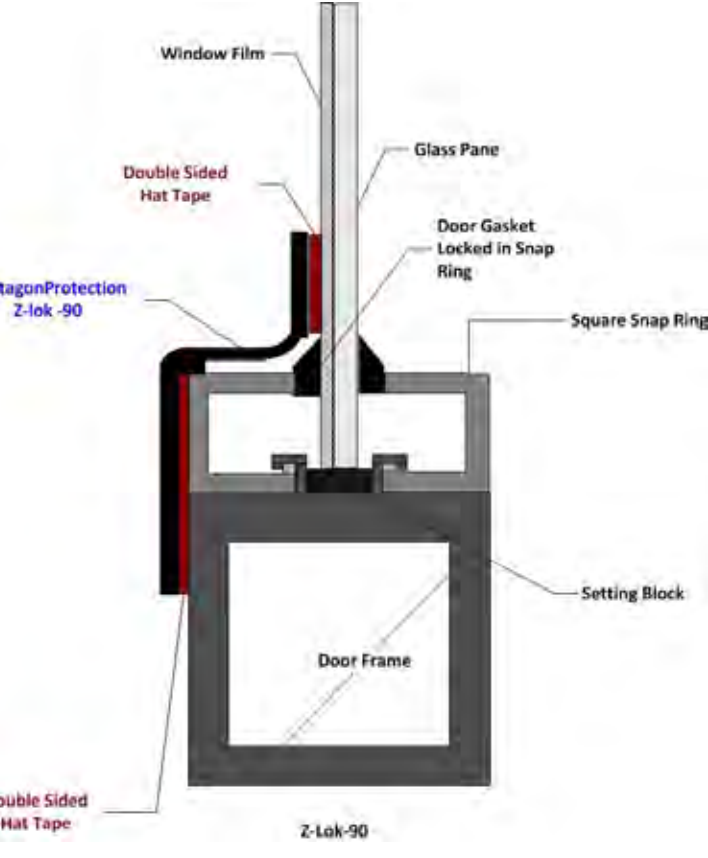
The All Flexible Z-Lok is the only effective attachment system for doors. The main issue with doorways is that you must attach the film and glass to the actual door frame, not the stops. Many attachment profiles or adhesives only serve to adhere the glass and film to the stops. When the glass is impacted, the stops pull out and the system fails. All Flexible Z-Lok is large enough that it goes beyond the window stops to adhere to the door frame. This is the only way to have an effective attached system on a doorway. The Z-Lok products come in a convenient 40' roll which is enough to do a 4-sided attachment on two standard doors. The All Flexible Z-Lok-45 is for use on doors with an angled stop. The Z-Lok-90 is for use on doors with a square stop making a 90 degree angle.

The total width of the Z-Lok-45 attachment is 2 1/2" (64mm). The flexible interior panel between the tape measures 1 1/4" wide.

The total width of the Z-Lok-90 attachment is 2 7/8" (71mm). The flexible interior panel between the tape measures 7/8" wide.

These attachments are made using a single extrusion TPE that is mated with a 3M high bond tape that is heat applied to the attachment during the manufacturing process for increased bond.

ALL PENTAGON PROTECTION ATTACHMENT SYSTEMS SHIP FROM OUR CALIFORNIA WAREHOUSE



F Z-LOK-90
ALL FLEXIBLE 45 DEGREE Z-LOK (40' ROLL)



METERS



A F MT1014
REPLACEMENT BULB FOR HEAT LAMP DEMONSTRATION KIT
This is the replacement bulb for the Heat Lamp Demonstration Kit. (Picture shows bulb installed in kit. This part number is for the bulb only.)



A F MT962
HEAT LAMP DEMONSTRATION UNIT
This Heat Lamp Demonstration Unit is a great tool for demonstrating the heat reduction capabilities of window films.



A F MT969
MERLIN LAZER TOUGHENED GLASS INDICATOR
The Merlin Lazer can be used to determine if any of the panes of glass tested have been strengthened. This is critical knowledge for determining which films are safe for application.



A F MT174
POCKET DETECTIVE DELUXE VISIBLE LIGHT TRANSMISSION & REFLECTION METER
The Pocket Detective Deluxe meter allows the user to measure the visible light transmission and reflection through any piece of glass whether it is fixed in place, or a roll down automotive window.



A F MT960
EDTM AE1601 ETEKT GLASS LOW-E COATING DETECTOR
Detect Invisible Low E Coatings on Double Pane Windows From a Single Side The ETEKT + has been serving an important role for glaziers worldwide for nearly 20 years: locate invisible Low-E coatings on IG units with a definitive, non-destructive test. With the release of the EDTM AE1601 (second generation ETEKT+), we've made some improvements to the reliability and temperature stability of the meter without compromising the features our customers have grown to love. This NEW ETEKT + allows you to confirm the invisible Low E coating is properly installed into your double pane IG units with a single test from a single side. You can also test a triple pane window by testing both sides of the window.



A F MT982
EDTM SD2400 SPECTRUM DETECTIVE METER
Finally! The EDTM SD2400 Spectrum Detective allows you to effortlessly demonstrate 3 window performance characteristics at a time: UV, Visible, and Infrared transmission values for your window films. NO POWER CORDS & NO LIGHT SOURCES NEEDED! The Spectrum Detective shows your customer performance numbers they can understand and proves to them that your window films is worth their investment. Lets face it, when it comes to window film performance, numbers don't lie. This tool has the power to make a poor salesperson look like a genius, and when a good salesperson gets their hands on a tool like this... Well, its almost unfair.



A F MT976
EDTM GLASS DEMONSTRATION SAMPLE SET
Conduct your sales demonstrations more effectively by showing the performance of a given window both with and without film installed. (Includes 2 clear single pane, 2 clear insulated glass panels and 2 clear Low-E panels)



1

2

3

4

5

6

7



MT175
POCKET DETECTIVE METER FOR ROLL DOWN WINDOWS

This Pocket Detective meter is designed to slide over the edge of the glass to measure visible light transmission on roll down windows.



MT978
RAYTEK NON-CONTACT LASER THERMOMETER

This Raytek laser thermometer will reads temperatures on solid surfaces by pointing a laser at the surface you wish to measure. This meter works best when used within three feet of surface measured. This is great for demonstrating the difference in surface temperature once window film is applied to glass. (Note: Measurements to be taken on the surface and not the glass.)



MT966
EDTM VP1165 VISIBLE LIGHT TRANSMISSION & POWER METER

Unlike many competing products, the EDTM VP1165 measures the FULL visible light spectrum (400 to 700 nm). Glare from computer monitors is a major cause of eyestrain in the office and home environment. Reducing visible light transmission through windows can greatly reduce this common ailment. The VP1165 meter can be used for evaluating the tint of windows, films and other transparent materials. The digital display is continually updated with real-time readings, allowing the user to take readings continuously. The VP1165 is powered by a 9 volt battery (included), and uses an end-mount sensor to take measurements.



MT967
EDTM SP1065 DIGITAL BTU METER

Demonstrate window film's solar reduction performance. The ability to block SOLAR energy is a key performance criteria for window film. Implement the EDTM SP1065 DIGITAL BTU Solar Meter into your sales presentation and educate your customer on the solar performance of your window films. The SP1065 is a durable and compact meter that has excellent resolution. The meter is powered by a 9 volt battery and includes a digital display that shows continual solar measurements. The meter is extremely simple to use; just turn on the meter and start taking readings. There are no cumbersome adjustments needed. You can take readings using the sun, or for indoor settings you can use our Heat Lamp Demonstration Kit MT962.



MT992
LASER LABS M100 TINT METER FOR ROLL DOWN WINDOWS

This Laser Labs meter can be used to measure visual light transmission on most roll down windows. Just slide the meter over the edge of the glass for a fast vlt reading through the glass.



MT993
LASER LABS M200 TINT METER FOR FIXED WINDOWS

This Laser Labs two-piece meter will measure visual light transmission on fixed windows. Great for determining the vlt numbers on windshields and back glass of an automobile.



MT968
EDTM SP2065 DIGITAL BTU & SOLAR TRANSMISSION METER

Increase sales by improving the quality of your sales presentation. Bring your window films performance to life in front of your customer, by incorporating the EDTM SP2065 Solar Transmission & Power Meter into your sales pitch. The SP2065 meter is extremely simple to use and allows you to demonstrate the solar transmission percentage of your window film product. Talk to your customer in a simple language they can understand: Solar Transmission Percentages. By doing so, you will quickly win your customer's confidence in your product. For those customers who prefer to deal with BTU measurements, the SP2065 meter can be switched into BTU mode as well, to measure incident solar energy. Simply press the red toggle button and you now have TWO meters in ONE!! This meter can even be used to measure approximate Solar Heat Gain Coefficient (SHGC) values.



MT973
EDTM UV1265 UV SENTRY TRANSMISSION METER

The EDTM UV1265 Meter is probably the simplest meter available for measuring the amount of UV that is transmitted through a transparent material. The meter measure has a huge linear range and measures to 0.1% transmission. The unit has been designed to be used by anyone in sales, field applications or the factory. The digital display is continually updated with real-time readings. Make an IMPACT with your sales presentations by illustrating the UV blocking capabilities of your product. Convincingly answer questions for that doubting customer. The UV1265 is powered by a 9 volt battery (included). The digital "UV SENTRY" is the perfect tool for demonstrating the UV blocking capabilities of window film. The UV Sentry is able to calculate the actual UV Transmission percentage associated with a window film. The UV1265 may be used to measure the UV characteristics of glass, film, coatings, laminates, or other materials. Use this meter to create CONVINCING sales presentations. The UV Sentry can promote your UV blocking products effectively.



MT974SOFTEDTM PROFESSIONAL METER DEMONSTRATION KIT WITH SOFT CASE

This EDTM Professional kit offers a single source for convenient and convincing sales demonstrations. The kit includes locations for glass samples, digital meters, lamps, product literature & more. This kit comes fully equipped to show your customers performance numbers they can understand. Using our simple EDTM Solar Transmission (MT968) and EDTM UV Transmission (MT973) meters. This demonstration kit will help close sales because it shows the customer the performance benefits of window film versus standard glass. This kit includes an EDTM SP2065 Solar Transmission & BTU Power Meter, a Heat Lamp Demonstration Unit, an EDTM UV Sentry Meter, and UV Demonstration Light. Many customers add popular optional items to the kit like the Glass Demonstration Sample Set and the Raytek Non-Contact Laser Thermometer (shown in picture).





The Choice of Window and Film Professionals



ZOLA
DISTRIBUTING

REV.09/13